



AL1000TECH

Technical Instructions	Printers	OEM Info	Tools	1
------------------------	----------	----------	-------	---

**CORPORATE
LOS ANGELES, USA**

US 1 800 394.9900
Int'l +1 818 837.8100
FAX 1 800 394.9910
Int'l +1 818 838.7047

ATLANTA, USA

US 1 877 676.4223
Int'l +1 770 516.9488
FAX 1 877 337.7976
Int'l +1 770 516.7794

DALLAS, USA

US 1 877 499.4989
Int'l +1 972 840.4989
FAX 1 877 774.1750
Int'l +1 972 840.1750

MIAMI, USA

US 1 800 595.429
Int'l +1 305 594.3396
FAX 1 800 522.8640
Int'l +1 305 594.3309

NEW YORK, USA

US 1 800 431.7884
Int'l +1 631 345.0121
FAX 1 800 431.8812
Int'l +1 631 345.0690

SANFORD, USA

US 1 800 786.9049
Int'l +1 919 775.4584
FAX 1 800 786.9049
Int'l +1 919 775.4584

TORONTO, CAN

CAN 1 877 848.0818
Int'l +1 905 712.9501
FAX 1 877 772.6773
Int'l +1 905 712.9502

BUENOS AIRES, ARG

ARG 0810 444.2656
Int'l +011 4583.5900
FAX +011 4584.3100

MELBOURNE, AUS

AUS 1 800 003. 100
Int'l +62 03 9561.8102
FAX 1 800 004.302
Int'l +62 03 9561-7751

SYDNEY, AUS

AUS 1 800 003.100
Int'l +62 02 9648.2630
FAX 1800 004.302
Int'l +62 02 9548.2635

MONTEVIDEO, URY

URY 02 902.7206
Int'l +5982 900.8358
FAX +5982 908.3816

JOHANNESBURG, S.A.

S.A. +27 11 974.6155
FAX +27 11 974.3593

Sharp AL1000/1010/1041/
1200/1220/1250/1521
Part Number: AL-100TD
Xerox XD100/102/103F/
105F/120F/125/130/130F/
155F/155DP
Part Number: 6R914

Gram Load: 190 gms
Yield @ 5%: 6,000 pgs
Pages/Min.: 8 (Printing)
10 (Copying)
Resolution: 600 x 600dpi
Toner Load: 220gm
Developer Load: 190gm

Phillips Screwdriver
Small Flat Blade Screwdriver
Needlenose Pliers

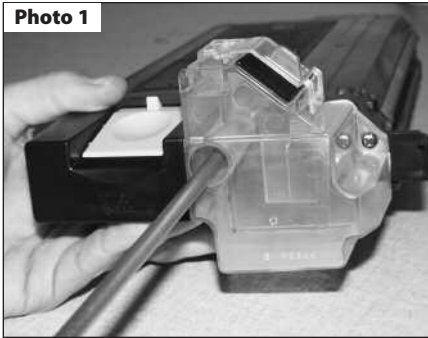


Photo 1

Step 1

Remove the two screws holding the waste container to the hopper.

(See Photo 1)

NOTE: The two screws holding the waste container are longer than the other cartridge screws. Make sure the correct screws are used during reassembly.

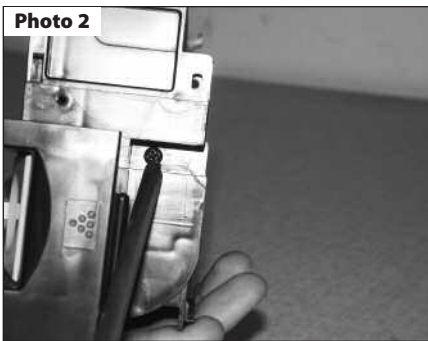


Photo 2

Step 2

Remove the two screws holding the end cap and the green cartridge release button.

(See Photo 2)



Photo 3

Step 3

Release the two plastic clips holding the end cap to the hopper.

(See Photo 3)

Remove the end cap.

Future Graphics (FG) is a distributor of compatible replacement parts and products for imaging equipment. None of FG's products are genuine OEM replacement parts and no affiliation or sponsorship is to be implied between FG and any OEM.

Notes

Future Graphics (FG) is a distributor of compatible replacement parts and products for imaging equipment. None of FG's products are genuine OEM replacement parts and no affiliation or sponsorship is to be implied between FG and any OEM.

Step 7

Dump the remaining developer, using dry compressed air clean off the developer roller.

Step 8

Remove the toner (large) fill plug from the hopper section.
 (See Photo 7)

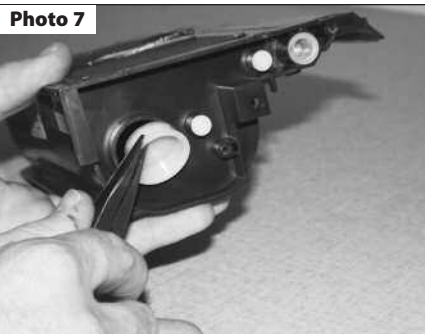
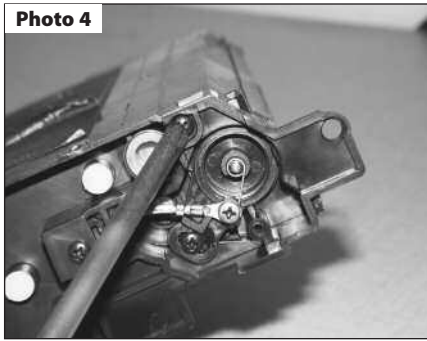


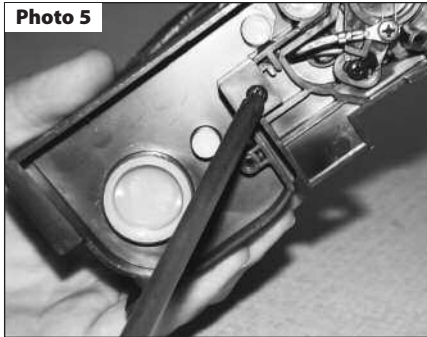
Photo 4



Step 4

Remove the screw located next to the developer (small) fill plug.
 (See Photo 4)

Photo 5



Step 5

Remove the screw closest to the toner (large) fill plug.
 (See Photo 5)

Photo 6



Step 6

Separate the magnetic roller section from the hopper section.

(See Photo 6)

NOTE: Make sure to keep the cartridge flat. If the cartridge is tilted in any direction developer will spill onto the work surface.

Step 9

Using dry compressed air or a vacuum clean out the toner hopper.

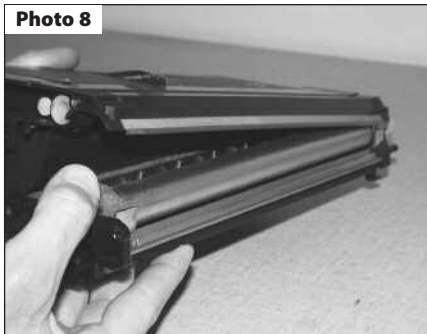
Step 10

With the magnetic roller towards you, carefully add 190 grams of developer onto the developer supply roller while rotating the magnetic roller backwards.

Step 11

Fill the hopper with 220 grams of toner. Reinstall the fill plug.

Photo 8



Step 12

While holding the magnetic roller assembly flat, carefully realign the hopper and the magnetic roller assembly.

(See Photo 8)

NOTE: Do not spill any of the developer.

Step 13

Reassemble in reverse order.